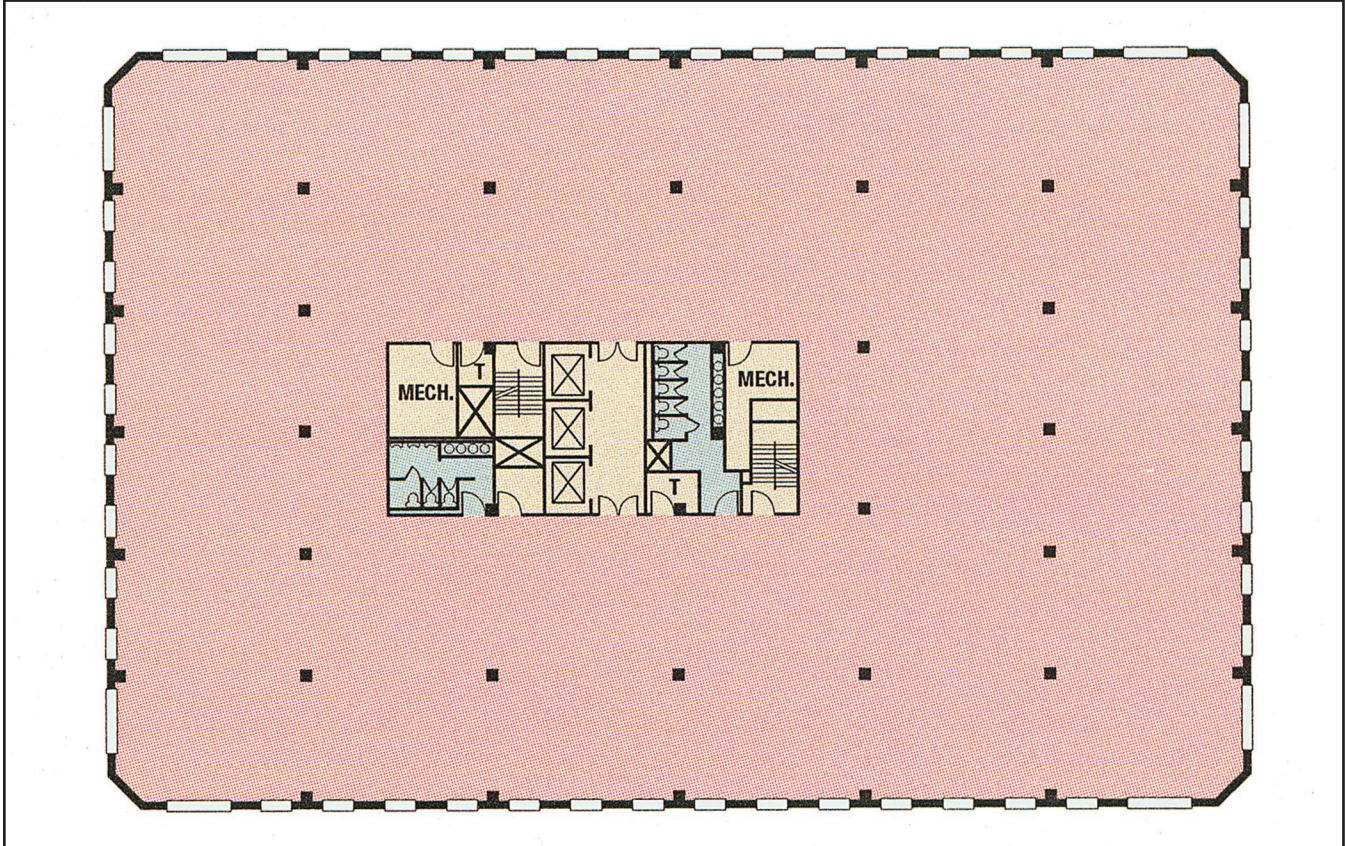


# NEWMARK

Real Estate and Financial Services

[www.newmarkre.com](http://www.newmarkre.com)



**One Washington Park: Typical Floorplan**

The Fidelco Group is proud to announce they have retained Newmark as the exclusive leasing agent for **One Washington Park** in Newark, NJ. Over 381,000 square feet of office space and a bank branch are available for immediate occupancy.

The Fidelco Group is an owner-developer of office, residential, industrial, and retail properties located in New Jersey, New York, Florida and Ohio. Its property portfolio totals over nine million square feet. The firm is an active investor in properties which require rehabilitation, repositioning and/or environmental remediation.



# NEWMARK

Real Estate & Financial Services

exclusive leasing agent  
**Norman B. Baker**  
Managing Partner

Newmark Real Estate of New Jersey, LLC  
301 Route 17N  
Rutherford, NJ 07070  
phone 201.460.5155  
fax 201.842.6701

email [nbaker@newmarkre.com](mailto:nbaker@newmarkre.com)  
web [www.newmarkre.com](http://www.newmarkre.com)